

CORRECTION

Open Access



Correction to: 3D skeletal uptake of ^{18}F sodium fluoride in PET/CT images is associated with overall survival in patients with prostate cancer

Sarah Lindgren Belal^{1*}, May Sadik², Reza Kaboteh², Nezar Hasani², Olof Enqvist³, Linus Svärm⁴, Fredrik Kahl³, Jane Simonsen⁵, Mads H. Poulsen⁶, Mattias Ohlsson⁷, Poul F. Højlund-Carlson⁵, Lars Edenbrandt² and Elin Trägårdh¹

Correction to: *EJNMMI Res*
<https://doi.org/10.1186/s13550-017-0264-5>

Unfortunately, the original version of this article contains an error. In Fig. 6, the plotted curves are incorrect. Please note that the original data is correct and statistical tests are valid for the survival analysis. The correct version of Fig. 6 can be found below.

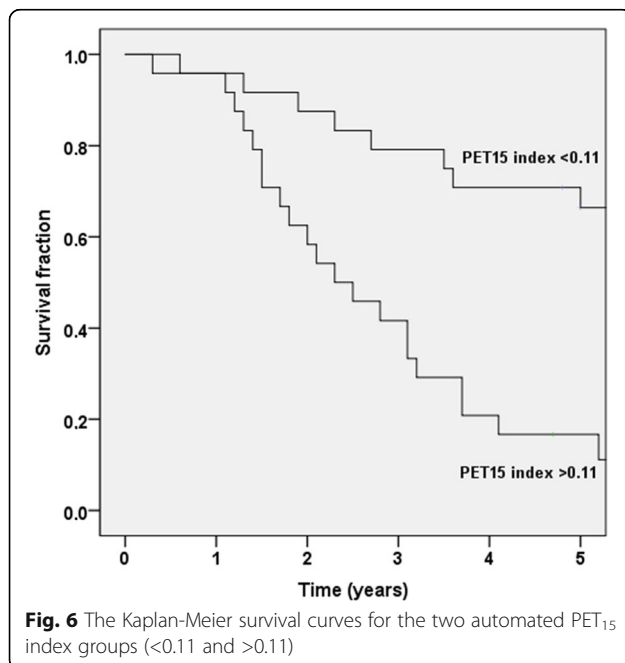
Author details

¹Department of Translational Medicine, Lund University, Malmö, Sweden. ²Department of Clinical Physiology, Sahlgrenska University Hospital, Göteborg, Sweden. ³Department of Signals and Systems, Chalmers University of Technology, Göteborg, Sweden. ⁴Eigenvision AB, Malmö, Sweden. ⁵Department of Nuclear Medicine, Odense University Hospital, Odense, Denmark. ⁶Department of Urology, Odense University Hospital, Odense, Denmark. ⁷Department of Astronomy and Theoretical Physics, Lund University, Lund, Sweden.

Published online: 20 May 2019

Reference

1. Belal SL, et al. 3D skeletal uptake of ^{18}F sodium fluoride in PET/CT images is associated with overall survival in patients with prostate cancer. *EJNMMI Res.* 2017;7:15. <https://doi.org/10.1186/s13550-017-0264-5>.



* Correspondence: sarah.lindgren_belal@med.lu.se

The original article can be found online at <https://doi.org/10.1186/s13550-017-0264-5>

¹Department of Translational Medicine, Lund University, Malmö, Sweden

Full list of author information is available at the end of the article