

ORIGINAL RESEARCH

Open Access

Monitoring tumour response during chemo-radiotherapy: a parametric method using FDG-PET/CT images in patients with oesophageal cancer

Pierre Vera^{1*}, Bernard Dubray², Odré Palie¹, Irène Buvat³, Sébastien Hapdey¹, Romain Modzelewski¹, Ahmed Benyoucef², Caroline Rousseau⁴, Marc-Etienne Meyer⁵, Stéphane Bardet⁶, Isabelle Gardin¹, Frederic Di Fiore⁷ and Pierre Michel⁷

Abstract

Background: The objective of this study is to investigate the feasibility and the additional interest of a parametric imaging (PI) method to monitor the early tumour metabolic response in a prospective series of oesophageal cancer patients who underwent positron emission tomography with fluoro-2-deoxy-D-glucose (FDG-PET/CT) before and during curative-intent chemo-radiotherapy.

Methods: Fifty-seven patients with squamous cell carcinoma (SCC) of the oesophagus prospectively underwent FDG-PET/CT before chemo-radiotherapy (CRT) (PET₁) and at 21 ± 3 days after the beginning of CRT (PET₂). The outcome was assessed at 3 months and 1 year after the completion of CRT (clinical examination, CT scan or FDG-PET/CT, biopsy). For each patient, PET₁ and PET₂ were registered using CT images. The 2 PET image sets were subtracted, so the voxels with significant changes in FDG uptake were identified. A model-based analysis of this graph was used to identify the tumour voxels in which significant changes occurred between the two scans and yielded indices characterising these changes (green and red clusters). Quantitative parameters were compared with clinical outcome at 3 months and at 1 year.

Results: The baseline tumour FDG uptake decreased significantly at PET₂ ($p < 0.0001$). The tumour volume significantly decreased between PET₁ and PET₂ ($p < 0.02$). The initial functional volume of the lesion (TV₁) was significantly lower ($p < 0.02$) in patients in clinical response (CR) at 3 months and 1 year. The volume of the lesion during the treatment (TV₂) was significantly lower in patients identified as in CR at 3 months ($p < 0.03$), but did not predict the outcome at 1 year. Multivariate analyses of outcome at 3 months showed that the risk of failure/death increased with younger age ($p = 0.001$), larger metabolic volume on PET₁ ($p = 0.009$) and larger volume with decreased FDG uptake ($p = 0.047$). As for outcome at 1 year, the risk of failure/death increased with younger age ($p = 0.006$), nodal involvement ($p = 0.08$) and larger volumes with increased uptake ($p = 0.03$).

Conclusion: A parametric method to assess tumour response on serial FDG-PET performed during chemo-radiotherapy was evaluated. Early metabolic changes, i.e. variations in FDG uptake, provided additional prognostic information in multivariate analyses ClinicalTrials.gov NCT 00934505.

(Continued on next page)

* Correspondence: pierre.vera@chb.unicancer.fr

¹Department of Nuclear Medicine, Henri Becquerel Cancer Centre and Rouen University Hospital & QuantIF-LITIS (Equipe d'Accueil (EA) 4108-Federation Recherche (FR) National Center for Scientific Research (CNRS) 3638), Faculty of Medicine, University of Rouen, Rouen 76821, France

Full list of author information is available at the end of the article

(Continued from previous page)

Trial registration: Current Controlled Trials ISRCTN7824458

Keywords: Positron emission tomography; Fluoro-deoxy-D-glucose; Oesophageal cancer; Chemo-radiotherapy; Parametric imaging

Background

Positron emission tomography with fluoro-2-deoxy-D-glucose (FDG-PET/CT) is commonly used in the initial staging and post-treatment follow-up of many cancer patients [1,2]. Since metabolic changes under treatment are likely to precede anatomic alterations [3-5], FDG-PET/CT is actively investigated as a way to assess tumour response to chemotherapy (CT) and radiotherapy (RT) in lymphomas [6,7], non-small cell lung [8-10], head and neck [11], and colorectal and breast cancers [12].

Oesophageal cancer is the third most frequent gastrointestinal cancer, with a poor prognosis and high mortality rates (5-year survival rates around 4% to 10% [13]). In clinical practice, FDG-PET has a well-established role in the diagnosis and staging of oesophageal cancer [14]. Comparisons of FDG uptake before and after treatment reported a better outcome in patients with complete metabolic response [15,16]. Definitive chemo-radiotherapy (CRT) has become the first-line therapeutic standard in patients with locally advanced tumours [17,18]. At the time of diagnosis, less than 50% of these patients have potentially operable tumours [19]. The early identification (e.g. around 25 to 30 Gy) of the tumours that do not respond to CRT would suggest to go for surgery and avoid full-dose CRT toxicity. Due to the heterogeneity of the published series [20], FDG-PET/CT cannot be yet recommended in routine practice to guide the initial treatment of patients with oesophageal cancer [21], particularly in those with squamous cell carcinoma [22].

The guidelines for tumour response assessment [23] include several indices quantifying FDG uptake (standard uptake value (SUV)_{max}, SUV_{mean}, SUV_{peak} and total lesion glycolysis (TLG)) or metabolic volume (tumour longitudinal length (TL) and tumour volume (TV)) [24,25]. These indices are calculated on a regional basis, i.e. represent index values measured over the whole tumour. Complex changes in tumour uptake/volume, namely heterogeneity in tumour response, can therefore be overlooked. An automatic method using parametric imaging (PI) has been proposed to quantify FDG uptake variations in metastatic colorectal cancers [26]. The main interest of this approach is its ability to describe heterogeneous tumour response at the voxel level.

In a previous analysis of 57 patients with oesophageal squamous cell carcinoma (SCC) and recruited in a prospective study [27], we showed that the parameters derived from baseline FDG-PET were good predictors of

outcome after CRT: larger tumour volume and higher SUV_{max}/TLG were associated to poor outcome at 3 months. Higher SUV_{max} values were also predictors of poor outcome at 1 year. FDG-PET performed during CRT at day 21 appeared to be of lower clinical relevance. We present a reanalysis of the same series, where the PI method was used to investigate the predictive value of the metabolic variations observed between FDG-PET/CT performed before and during curative-intent CRT. Our goal was to demonstrate that the PI method was applicable to oesophageal SCC treated with concomitant radiotherapy and chemotherapy (and not limited to colorectal cancers after chemotherapy as initially described) and that it would provide additional information to conventional clinical and FDG-PET/CT data.

Methods

Study design

The design of the study (RTEP3, NCT 00934505, <http://www.clinicaltrials.gov/>) has been previously described (see details in [27]). Briefly, patients with histological proof of oesophageal SCC and candidate to curative-intent CRT [28] were prospectively included after signing a consent form. The target sample size was 100 patients. Slow recruitment led us to close the study after the inclusion of 57 patients, an intermediary analysis showing that statistical significance would not be reached with the planned sample size.

Initial staging included oesophagoscopy with biopsies, chest and abdominal computed tomography (CT scan) and endoscopic ultrasound. Each patient underwent FDG-PET at baseline within 15 days before CRT (PET₁) and at day 21 (\pm 3 days) of CRT (PET₂). Tumour response was assessed at 3 months and 1 year after CRT with clinical investigation, CT or FDG-PET/CT, and oesophagoscopy with biopsies (if possible).

FDG-PET imaging

The images were acquired with the arms positioned over the head and with free breathing. Six to eight bed positions per patient were acquired from the head to the upper third of the thighs. The FDG-PET scanners used were as follows: Biograph Sensation 16 (Siemens, Erlangen, Germany), Gemini (Philips, Best, The Netherlands) and Discovery LS (General Electric Medical Systems, Milwaukee, OR, USA). A specific phantom [29] was developed and used to compare and follow the quality control of the PET devices in

the participating centres. For each patient, two FDG-PET scans were performed using the same machine and under the same operational conditions, i.e. the patients fasted overnight or for at least 6 h, blood glucose levels were measured before each FDG-PET/CT. A total of 4.5 MBq/kg was administered intravenously after a rest period of at least 20 min. The acquisitions had to start at 60 ± 10 min post-injection. The same post-injection delay (± 5 min) was mandatory for PET₂ during CRT. Reconstruction of the PET images was performed using ordered subset expectation maximisation (OSEM). The PET images were corrected for random coincidences, scatter and attenuation using the CT scan data.

FDG-PET/CT analysis

All of the FDG-PET/CT images were collected in Rouen to insure homogeneous analyses.

Quantitative analysis

The FDG-PET/CT images were analysed on a Leonardo® clinical workstation with TrueD® software (Siemens Medical Solutions, Hoffman Estates, Knoxville, TN, USA). For each patient, an experienced nuclear physician selected regions of interest (ROIs) in the most intense areas of FDG accumulation in the primary tumour on PET₁. Any increased FDG uptake was compared with the anatomical findings from the CT scan. The presence of possible oesophagitis was defined by a moderate FDG uptake on the PET₂, with a disappearance of uptake at 3-month and/or 1-year follow-up and the absence of recurrence at 3 months and 1 year. The tumour volume (cm³) was manually determined by a single nuclear medicine physician (OP) using a percentage of the SUVmax (TV₁ for PET₁ and TV₂ for PET₂). The reproducibility and the advantage of the visual determination of the functional volume by physician have been previously shown and discussed [27]. The maximum SUV was defined as the highest-activity voxel value (SUVmax₁ for PET₁ and SUVmax₂ for PET₂). The mean SUV in TV was defined as the mean tumour activity concentration (SUVmean₁ for PET₁ and SUVmean₂ for PET₂). The percentage ($\Delta\%$) of change between PET₁ and PET₂ was calculated as $(\text{PET}_1 - \text{PET}_2) / \text{PET}_1$ for SUVmax ($\Delta\%$ SUVmax), SUVmean ($\Delta\%$ SUVmean) and TV ($\Delta\%$ TV).

Parametric imaging method

The salient feature of the PI analysis is to assess the changes in metabolic activity at the voxel level in order to underline heterogeneities in tumour response [26]. The FDG-PET/CT images were transferred on a Dosisoft workstation (v 1.4, Oncoplanet, Dosisoft, Cachan, France). For each patient, a large cubic VOI was selected in the most intense area of FDG accumulation in the primary tumour and lymph nodes on the baseline

(PET₁) and mid-treatment PET images (PET₂), by an experienced nuclear physician. PET₁ and PET₂ were co-registered using a rigid method, under visual control and combined with an affine method when necessary. The registration was restricted to the thorax to limit the uncertainties on the oesophagus position. PET₁ and PET₂ datasets were subtracted, yielding a 3D image of the VOI, with the signal in each voxel i being proportional to the difference in SUV: $\text{DIFF}(i) = (\text{SUV}_2(i) - \text{SUV}_1(i))$. Then, the voxels of DIFF were classified into four classes according to the voxel values in both the PET₁ and DIFF datasets as follows:

- Cl₁: high SUV on PET₁ and decreased SUV on PET₂
- Cl₂: SUV increased between PET₁ and PET₂
- Cl₃: low SUV on PET₁ with no substantial SUV changes at PET₂ (i.e. background, etc.)
- Cl₄: voxels in which physiologic changes are not related to the tumour masses (i.e. voxels with a low SUV on PET₁) (i.e. heart, lung disease, etc.).

Voxel classification was performed using a stochastic expectation maximisation algorithm, assuming a Gaussian mixture model (GMM) for the distribution of voxel values [26]. A parametric dataset was created from DIFF by setting the signal in voxels belonging to Cl₃ and Cl₄ to zero. For visualisation purpose, the voxels belonging to Cl₁ (decreased uptake) were coded on a green colour scale, and the voxels belonging to Cl₂ (increased uptake) were coded on a red colour scale. By definition, no stable voxel activity could be observed in the parametric volume. At the end of the process, the PI consists of one or several clusters of voxels either red (r) or green (g). The green clusters represent the part(s) of the tumours with decreased in SUV, while the red clusters represent the part(s) with increase in SUV between PET₁ and PET₂. The cluster volume (V_r or V_g in cm³) was calculated for each cluster.

Statistical analysis

The primary endpoint was disease-free survival at 3 months and 1 year after treatment, with local/regional/distant relapse or death being considered as events. Complete response (CR) to CRT was defined as no residual tumour detected at endoscopy (negative biopsies) and without regional or distant disease on CT or FDG-PET/CT.

All statistical analyses were performed with NCSS software (version 07.1.18, Kaysville, UT, USA). As for univariate analyses, categorical variables were compared using chi-squared tests, with Yates' correction for small samples. Quantitative variables were compared using t tests after natural logarithm transformation to obtain Gaussian distributions. Multivariate analyses were performed using stepwise logistic regression. A threshold of $p \leq 0.05$ was considered as statistically significant (bilateral tests).

Results

Fifty-seven patients were prospectively included. Patients 8, 16, 25, 31 and 40 were secondarily excluded because of disease progression at the time of diagnosis. Patient 14 died during RCT. In comparison with the initial study [27], and for technical reasons related to the impossibility to use CT images in the co-registration method in the software (non joined slices), the PET₁ of patients 42 and 45 and the PET₂ of patients 6, 27 and 50 were not available. As a result, 46 patients were fully evaluable.

Table 1 shows the characteristics of the 46 evaluable patients. Five patients (11%) had cancer extending to more than one anatomical third of the oesophagus. Twenty-nine (63%) and 22 (48%) patients were alive without disease at 3 months and at 1 year, respectively.

At least one green cluster was observed in all the 46 evaluable patients, demonstrating some SUV decrease between the two PET examinations. Eight patients had two green clusters, none had three green clusters, one had four green clusters, and two had five green clusters. Fifteen patients had at least one red cluster, nine had two red clusters, two had three red clusters, one had four red clusters, and one had five red clusters. The presence of both green and red clusters in the same patient illustrates the spatially heterogeneous evolution of lesions' uptake. An example is shown in Figure 1.

The patients who died or those without complete remission at 3 months (Table 2) were more likely to have

T4 cancer, tumour extending to more than one third of the oesophagus, nodal involvement, larger metabolic volumes on PET₁ and PET₂, and larger green (regression) or red (progression) volumes on FDG-PET/CT parametric analysis. At 1 year (Table 3), the patients who died or those without complete remission were younger, had larger tumours (more than one third of the oesophagus and larger metabolic volume on PET₁) with more frequent nodal involvement and had larger red volumes (progression).

Multivariate analyses (Table 4) of outcome at 3 months showed that the risk of failure/death increased with younger age ($p = 0.001$), larger metabolic volume on PET₁ ($p = 0.009$) and larger green volume ($p = 0.047$). As for outcome at 1 year, the risk of failure/death increased with younger age ($p = 0.006$), nodal involvement ($p = 0.08$) and larger red volumes ($p = 0.03$).

Discussion

In this prospective, multicentre study, an automated parametric method [26] was successfully used to investigate the prognostic value of variations in FDG uptake during curative-intent RCT in oesophageal squamous cell carcinoma. The co-registration of sequential PET examinations allows a voxel-based analysis, as a way to investigate spatial variability in tumour response to treatment. In multivariate analyses, a larger volume of red voxels, i.e. with increased uptake between baseline PET and PET performed at day 21, was significantly associated with a greater probability of treatment failure/death at 1 year.

Our results were obtained in a homogeneous population of patients with oesophageal squamous cell carcinoma. Oesophageal squamous cell carcinoma is very sensitive to CRT [30]. During CRT, SUV_{max}, SUV_{mean} and TV decreased sharply (Table 2). The SUV value depends on several parameters: delay between injection and acquisition [31], noise level, spatial resolution in the reconstructed images, and region selected to estimate the SUV [32]. SUV measurements have been shown to vary between centres [33]; thus, multicentre studies require rigorous standardisation of the FDG-PET procedures [34]. In the present study, all of the paired FDG-PET/CTs for a given patient were performed in the same department, avoiding inter-centre variability. The cross-calibration of the participating centres was assessed in a previous clinical study [35]. The performance and quality control of the PET/CT devices were monitored by using a specific phantom developed by our group [29], and the post-injection delay was kept constant to facilitate inter-patient and inter-centre comparison. All quantitative analyses were performed in Rouen on the same workstation by one nuclear medicine physician. We relied on an experienced nuclear medicine physician to

Table 1 Patients' characteristics

Characteristics	Evaluable patients (46)
Sex: F/M (%)	4 (9)/42 (91)
Age (years), mean (range)	62 (39 to 82)
WHO status: <i>n</i> (%)	
0	20 (43)
1	16 (35)
2	3 (7)
Undetermined	7 (15)
T/N stage: <i>n</i> (%)	
cT2	6 (13)
cT3	35 (76)
cT4	5 (11)
cN + ^a	16 (35)
Tumour location (third): <i>n</i> (%)	
Upper	13 (28)
Middle	18 (39)
Lower	10 (22)
Upper + middle	3 (7)
Middle + lower	2 (4)

^aEnlarged lymph nodes on CT scan or EUS or metabolic lymph nodes on FDG-PET/CT.

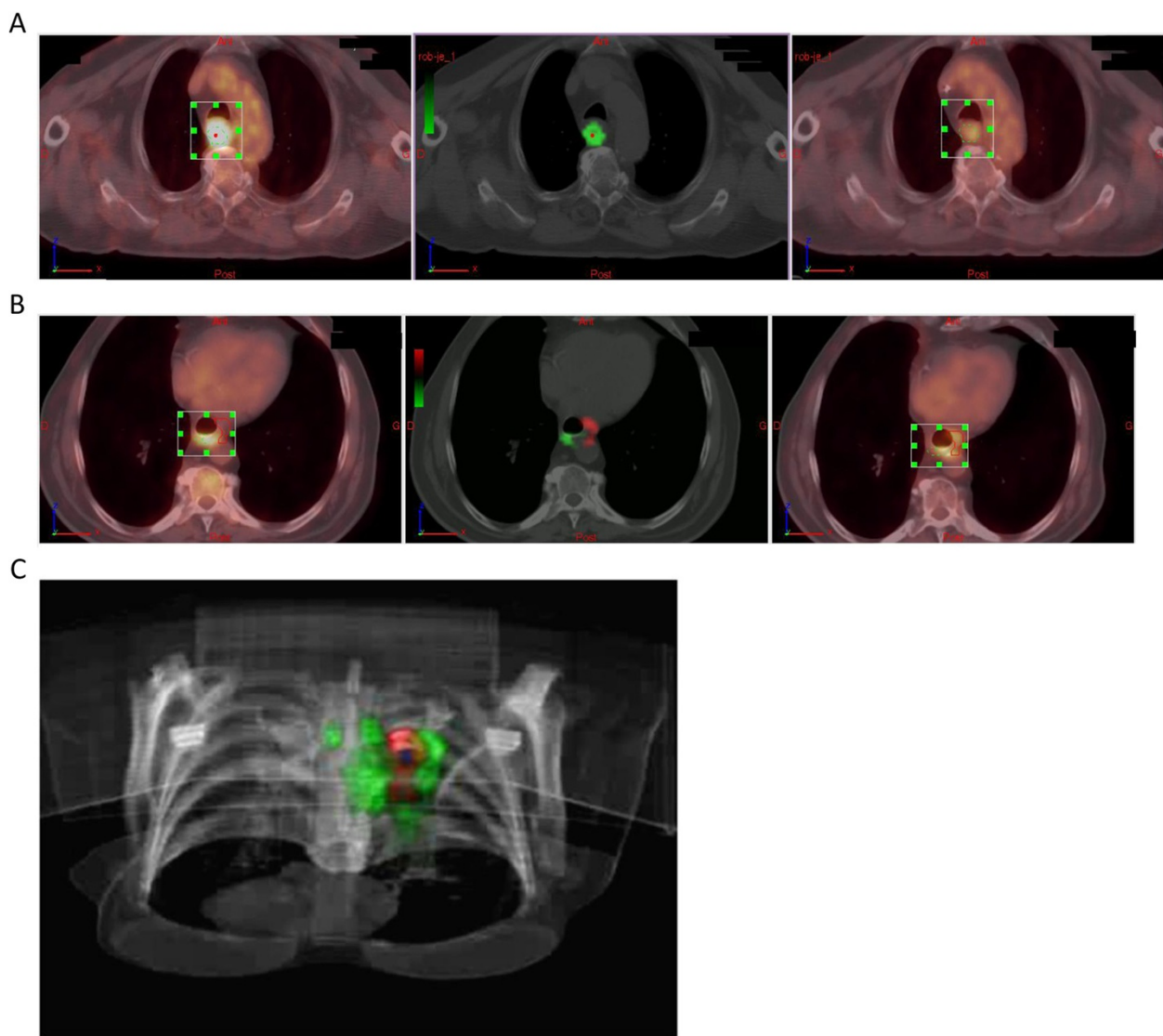


Figure 1 Parametric analysis of the variations in FDG uptake before and during treatment. Left panel: before treatment (TEP₁), right panel: at day 21 during treatment (TEP₂), middle panel: co-registration of TEP₁ and TEP₂. The green voxels are those in which FDG uptake has decreased between TEP₁ and TEP₂; the red voxels are those in which FDG uptake has increased. Voxels in which FDG uptake remained stable do not appear. **(A)** All voxels are green, indicating homogeneous decrease in FDG uptake (patient was in CR at 1, but small V_G of 6 cm³). **(B)** An example of spatially heterogeneous response, with green and red voxels appearing in the same tumour (patient with recurrence at 1 year). **(C)** A 3D visualisation of the PI imaging.

delineate the tumour metabolic volume (TV) since low FDG uptake on images acquired during treatment limits the use of automatic segmentation methods [8]. Acute inflammatory reactions, as reported in head and neck cancer [36], may also hamper the analyses of PET images during treatment. Oesophagitis was present in 9 out of 46 (19%) patients, and 3 of 46 had a nasogastric feeding tube.

In a previous analysis of the same group of patients [27], smaller TVs at baseline (PET₁) and at day 21 (PET₂) were associated to higher probabilities of response at 3 months, as already reported by other

investigators [25,37,38]. However, we failed to demonstrate a prognostic value for $\Delta\%SUV_{max}$, $\Delta\%SUV_{mean}$ or $\Delta\%TV$, showing similar evolution of these quantitative parameters whatever the tumour response to treatment. These indices are calculated over the whole tumour and do not address spatial variations of response to treatment within the tumour. In the present report, we aimed at investigating intra-tumour heterogeneity in FDG uptake as an early measure of response to treatment, our results being in line with the encouraging ones published in oesophageal (mixing SCC and adenocarcinomas), cervical and head and neck cancers [39,40].

Table 2 Univariate analysis according to outcome at 3 months

	Endpoint at 3 months		p
	CR (n = 29)	Failure/death (n = 17)	
Clinical factors			
Age	64.0 (59.6 to 68.3)	59.4 (53.9 to 64.9)	0.18
F/M	3/26	1/16	1.0
T2/T3/T4	2/27/0	4/8/5	0.001
1/2-site T	28/1	13/4	0.055
N0/N1	22/7	8/9	0.048
FDG-PET/CT parameters			
SUVmax ₁	12.5 (10.8 to 14.2)	15.4 (10.9 to 20.0)	0.44
TV ₁	9.7 (7.2 to 13.1)	20.6 (13.2 to 32.2)	0.004
SUVmax ₂	7.1 (5.9 to 8.2)	8.6 (6.4 to 10.9)	0.23
TV ₂	4.8 (3.3 to 6.9)	11.1 (4.6 to 13.6)	0.009
V _g	3.1 (1.8 to 5.1)	5.8 (3.5 to 9.8)	0.056
V _r	5.6 (4.0 to 7.9)	9.8 (6.2 to 15.5)	0.047

Quantitative variables: mean (95% confidence limits).

In both analyses, the patients with CR (either at 3 months or at 1 year) were older than the ones who died or whose tumour relapsed. These differences were statistically significant at 3 months and 1 year in the present analysis, varying from our original report [27], where age was a predictor of outcome only at 1 year and not at 3 months, possibly as a consequence of the exclusion of two patients and/or the introduction of new variables (V_g and V_r) in the logistic model.

Our aim was to characterise the variations in FDG uptake at the voxel level. The parameters were extracted from an image set combining the FDG-PET/CTs performed before and during CRT. This procedure is similar to the use of ictal and interictal perfusion single-photon

emission computed tomography (SPECT) in the SISCOM procedure [41]. Such an approach critically relies on registration accuracy. Our FDG-PET/CTs were co-registered over the thorax region using a rigid method, then visually inspected and, if necessary, re-registered with an affine registration method. The repeatability of the method has been previously validated, as well as the impact of misregistration on the generation of green and red clusters [26]. The classification of the voxels according to the differences in uptake at PET₁ and PET₂ and their position as regards the CT tumour volume were visually checked. Some voxels obviously belonging to the heart or related to oesophagitis had to be manually re-classified. Our previous analysis [27] failed to support FDG uptake or

Table 3 Univariate analysis according to outcome at 1 year

	Endpoint at 1 year		p
	CR (n = 22)	Failure/death (n = 24)	
Clinical factors			
Age	66.4 (62.3 to 70.5)	58.5 (53.5 to 63.5)	0.02
F/M	3/19	1/23	0.34
T2/T3/T4	3/19/0	3/16/5	0.08
1/2-site T	22/0	19/5	0.05
N0/N1	21/1	9/15	<10 ⁻⁴
FDG-PET/CT parameters			
SUVmax ₁	10.9 (9.3 to 12.9)	13.7 (11.2 to 16.8)	0.08
TV ₁	9.0 (6.5 to 12.5)	17.8 (12.2 to 26.0)	0.007
SUVmax ₂	6.3 (5.2 to 7.6)	7.5 (6.0 to 9.3)	0.22
TV ₂	6.2 (3.7 to 10.2)	7.0 (4.5 to 10.7)	0.69
V _g	3.2 (2.1 to 4.7)	5.3 (2.9 to 9.8)	0.33
V _r	4.5 (3.1 to 6.6)	10.2 (7.1 to 14.5)	0.002

Quantitative variables: mean (95% confidence limits).

Table 4 Multivariate analysis of outcome at 3 months and 1 year (logistic regression)

Endpoint	Covariates	Odds ratio (95% CI)	p	Correctly classified	AUC ROC
3 months	Age	0.94 (0.90 to 0.98)	0.001	76%	0.84
	Ln(TV ₁)	2.93 (1.31 to 6.60)	0.009		
	Ln(1 + V _g)	2.23 (1.01 to 4.96)	0.047		
1 year	Age	0.95 (0.92 to 0.99)	0.006	78%	0.89
	N+	20.9 (2.24 to 195)	0.008		
	Ln(V _r)	3.08 (1.12 to 8.46)	0.03		

Natural logarithm (Ln) transformations were used to obtain Gaussian distributions for quantitative variables. 95% CL, 95% confidence limits; AUC ROC, area under receiver operating characteristics curve.

metabolic volume measured on PET₂ as prognostic/predictive indices. In the present study, a predictive value of V_r and V_g (including Ln(V_r) or Ln(1 + V_g)) was demonstrated in multivariate analyses, suggesting that PET₂ could be of clinical interest.

The main feature of the present parametric method presented here is the quantification of tumour response to treatment at the voxel level, possibly more informative than a single value (e.g. SUVmax) calculated over the whole functional volume. Our method seems attractive when monitoring tumour response on serial FDG-PET/CT as oesophageal cancers are hardly visible on the CT images. The present method could become a valuable tool to quantify dissociated responses on multiple tumour sites, e.g. primary tumour and metastatic nodes, provided that all the regions of interest are selected. Multivariate analyses showed that the parametric method added some predictive value to more conventional variables. The association between larger green volumes (i.e. decreased uptake between PET₁ and PET₂) and worse outcome at 3 months appears to be counter-intuitive. Our data suggest that large initial tumour volumes are the most likely (1) to shrink during treatment (explaining the large absolute green volumes) and (2) to shrink only partially, so persistent activity is still visible on PET₂. For example, if a 50-cm³ functional volume at PET₁ decreased to 30 cm³ at PET₂ (i.e. a major response), a large green volume (20 cm³) would be anyway associated to a bad outcome related to the large initial volume. In contrast, a small green volume (e.g. 2 cm³) would be measured on a 5-cm³ initial functional volume with the response of similar amplitude, i.e. a 3-cm³ residual volume at PET₂, also associated to treatment failure despite a relatively small initial volume. Statistically speaking, our limited number of patients precluded us to test for interaction between initial and green volumes. The omission of the green volume from the multivariate analyses did not alter the proportion of correctly classified patients (76% (3 months) and 78% (1 year)), but slightly decreased the area under the ROC curve (from 0.84 to 0.79).

A limitation of the present study is the relatively small number of evaluable patients. The planned sample size

was not reached due to accrual slower than anticipated [27]. We could anyway demonstrate that 46 patients with oesophageal SCC could be prospectively recruited in a multicenter setting, all investigators abiding to strict acquisition procedures and analysed together using an innovative approach. The clinical value of FDG-PET/CT during radiotherapy deserves further validation, possibly using the method presented here.

Conclusion

This prospective, multicentre study performed in patients with squamous cell oesophageal cancer evaluated a parametric method to monitor heterogeneous tumour response patterns on serial FDG-PET/CT images acquired during radiotherapy. We demonstrate its feasibility and ability to characterise early metabolic changes and suggest that it provides added prognostic information to conventional variables such as SUVmax and TV.

Competing interests

The authors declare that they have no competing interests.

Authors' contributions

PV and PM designed the study. PV, BD and OP did the data analysis and writing of the paper. IB, IG, SH and RM developed the method. PM, AB, CR, M-EM, FDF and SB recruited the patients. All authors read and approved the final manuscript.

Acknowledgements

This study was supported by grants from the Ligue Contre le Cancer de Haute Normandie and from the cancer centers (Centre Henri Becquerel, Rouen; Centre Oscar Lambret, Lille; Centre Francois Baclesse, Caen) included in the Canceropole Nord-Ouest. We would like to thank the patients who accepted to participate in the present study, their referring gastroenterologists and radiation oncologists (Nantes, Rouen, Amiens, Caen, Nancy, Paris-Createil and Lyon). We also wish to thank the technologists and assistants from the Department of Nuclear Medicine (Centre Henri Becquerel) for their help in managing the patients for this study. We are particularly thankful to Dr L-F. Pepin, Mrs P. Gouel and A. Dumouchel for their excellent collaboration.

Author details

¹Department of Nuclear Medicine, Henri Becquerel Cancer Centre and Rouen University Hospital & QuantIF-LITIS (Equipe d'Accueil (EA) 4108-Federation Recherche (FR) National Center for Scientific Research (CNRS) 3638), Faculty of Medicine, University of Rouen, Rouen 76821, France. ²Department of Radiation Oncology, Henri Becquerel Cancer Centre & QuantIF-LITIS (Equipe d'Accueil (EA) 4108), Faculty of Medicine, University of Rouen, Rouen 76821, France. ³Commissariat à l'Energie Atomique (CEA)-Service Hospitalier Frédéric Joliot (SHFJ), Orsay F-75794, France. ⁴Department of Nuclear Medicine, Renée

Gauducheau Cancer Centre, Bd J Monod, Nantes 44850, France. ⁵Department of Nuclear Medicine, Amiens University Hospital, 354 Boulevard de Beauville, Amiens 80000, France. ⁶Department of Nuclear Medicine, François Baclesse Cancer Centre, 3 Avenue du Général Harris, Caen 14000, France. ⁷Hepatogastroenterology Department, Digestive Oncology Unit, Rouen University Hospital, University of Rouen, Rouen 76821, France.

Received: 31 October 2013 Accepted: 18 February 2014
Published: 7 March 2014

References

- Ben-Haim S, Ell P: ¹⁸F-FDG PET and PET/CT in the evaluation of cancer treatment response. *J Nucl Med* 2009, **50**(1):88–99.
- Krause BJ, Herrmann K, Wieder H, Zum Buschenfelde CM: ¹⁸F-FDG PET and ¹⁸F-FDG PET/CT for assessing response to therapy in esophageal cancer. *J Nucl Med* 2009, **50**(Suppl 1):895–965.
- Choi NC, Fischman AJ, Niemierko A, Ryu JS, Lynch T, Wain J, Wright C, Fidiias P, Mathisen D: Dose–response relationship between probability of pathologic tumor control and glucose metabolic rate measured with FDG PET after preoperative chemoradiotherapy in locally advanced non-small-cell lung cancer. *Int J Radiat Oncol Biol Phys* 2002, **54**(4):1024–1035.
- Mac Manus MP, Hicks RJ, Matthews JP, McKenzie A, Rischin D, Salminen EK, Ball DL: Positron emission tomography is superior to computed tomography scanning for response-assessment after radical radiotherapy or chemoradiotherapy in patients with non-small-cell lung cancer. *J Clin Oncol* 2003, **21**(7):1285–1292.
- Weber WA: Use of PET for monitoring cancer therapy and for predicting outcome. *J Nucl Med* 2005, **46**(6):983–995.
- Cheson BD, Pfistner B, Juweid ME, Gascoyne RD, Specht L, Horning SJ, Coiffier B, Fisher RI, Hagenberg A, Zucca E, Rosen ST, Stroobants S, Lister TA, Hoppe RT, Dreyling M, Tobinai K, Vose JM, Connors JM, Federico M, Diehl V: Revised response criteria for malignant lymphoma. *J Clin Oncol* 2007, **25**(5):579–586.
- Juweid ME, Stroobants S, Hoekstra OS, Mottaghy FM, Dietlein M, Guermazi A, Wiseman GA, Kostakoglu L, Scheidhauer K, Buck A, Nauman R, Spaepen K, Hicks RJ, Weber WA, Reske SN, Schwaiger M, Schwartz LH, Zijlstra JM, Siegel BA, Cheson BD: Use of positron emission tomography for response assessment of lymphoma: consensus of the Imaging Subcommittee of International Harmonization Project in Lymphoma. *J Clin Oncol* 2007, **25**(5):571–578.
- Edet-Sanson A, Dubray B, Doyeux K, Back A, Hapdey S, Modzelewski R, Bohn P, Gardin I, Vera P: Serial assessment of FDG-PET FDG uptake and functional volume during radiotherapy (RT) in patients with non-small cell lung cancer (NSCLC). *Radiother Oncol* 2012, **102**(2):251–257.
- Hicks RJ: Role of ¹⁸F-FDG PET in assessment of response in non-small cell lung cancer. *J Nucl Med* 2009, **50**(Suppl 1):315–425.
- Zhang HQ, Yu JM, Meng X, Yue JB, Feng R, Ma L: Prognostic value of serial [¹⁸F]fluorodeoxyglucose PET-CT uptake in stage III patients with non-small cell lung cancer treated by concurrent chemoradiotherapy. *Eur J Radiol* 2011, **77**(1):92–96.
- Gupta T, Jain S, Agarwal JP, Rangarajan V, Purandare N, Ghosh-Laskar S, Dinshaw KA: Diagnostic performance of response assessment FDG-PET/CT in patients with head and neck squamous cell carcinoma treated with high-precision definitive (chemo)radiation. *Radiother Oncol* 2010, **97**(2):194–199.
- Storto G, Nicolai E, Salvatore M: [¹⁸F]FDG-PET-CT for early monitoring of tumor response: when and why. *Q J Nucl Med Mol Imaging* 2009, **53**(2):167–180.
- Keighley MR: Gastrointestinal cancers in Europe. *Aliment Pharmacol Ther* 2003, **18**(Suppl 3):7–30.
- van Westreenen HL, Westerterp M, Bossuyt PM, Pruim J, Sloof GW, van Lanschot JJ, Groen H, Pluukker JT: Systematic review of the staging performance of ¹⁸F-fluorodeoxyglucose positron emission tomography in esophageal cancer. *J Clin Oncol* 2004, **22**(18):3805–3812.
- Flamen P, van Cutsem E, Lerut A, Cambier JP, Haustermans K, Bormans G, De Leyn P, van R, De Wever W, Ectors N, Maes A, Mortelmans L: Positron emission tomography for assessment of the response to induction radiochemotherapy in locally advanced esophageal cancer. *Ann Oncol* 2002, **13**(3):361–368.
- Kim MK, Ryu JS, Kim SB, Ahn JH, Kim SY, Park SI, Kim YH, Shin JH, Jung HY, Lee GH, Choi KD, Cho KJ, Kim JH: Value of complete metabolic response by ¹⁸F-fluorodeoxyglucose-positron emission tomography in oesophageal cancer for prediction of pathologic response and survival after preoperative chemoradiotherapy. *Eur J Cancer* 2007, **43**(9):1385–1391.
- Courrech Staal EF, Aleman BM, Boot H, van Velthuysen ML, van TH, van Sandick JW: Systematic review of the benefits and risks of neoadjuvant chemoradiation for oesophageal cancer. *Br J Surg* 2010, **97**(10):1482–1496.
- Gebski V, Burmeister B, Smithers BM, Foo K, Zalcberg J, Simes J: Survival benefits from neoadjuvant chemoradiotherapy or chemotherapy in oesophageal carcinoma: a meta-analysis. *Lancet Oncol* 2007, **8**(3):226–234.
- Enzinger PC, Mayer RJ: Esophageal cancer. *N Engl J Med* 2003, **349**(23):2241–2252.
- Omloo JM, van Heijl M, Hoekstra OS, van Berge Henegouwen MI, van Lanschot JJ, Sloof GW: FDG-PET parameters as prognostic factor in esophageal cancer patients: a review. *Ann Surg Oncol* 2011, **18**(12):3338–3352.
- Kwee TC, Takahara T, Niwa T: Diffusion-weighted whole-body imaging with background body signal suppression facilitates detection and evaluation of an anterior rib contusion. *Clin Imaging* 2010, **34**(4):298–301.
- Lordick F, Ott K, Krause BJ: New trends for staging and therapy for localized gastroesophageal cancer: the role of PET. *Ann Oncol* 2010, **21**(Suppl 7):vii294–vii299.
- Young H, Baum R, Cremerius U, Herholz K, Hoekstra O, Lammertsma AA, Pruim J, Price P, European Organization for Research and Treatment of Cancer (EORTC) PET Study Group: Measurement of clinical and subclinical tumour response using [¹⁸F]-fluorodeoxyglucose and positron emission tomography: review and 1999 EORTC recommendations. *Eur J Cancer* 1999, **35**(13):1773–1782.
- Hatt M, Visvikis D, Pradier O, Cheze-Le RC: Baseline ¹⁸F-FDG PET image-derived parameters for therapy response prediction in oesophageal cancer. *Eur J Nucl Med Mol Imaging* 2011, **38**(9):1595–1606.
- Hatt M, Visvikis D, Albarghach NM, Tixier F, Pradier O, Cheze-Le RC: Prognostic value of ¹⁸F-FDG PET image-based parameters in oesophageal cancer and impact of tumour delineation methodology. *Eur J Nucl Med Mol Imaging* 2011, **38**(7):1191–1202.
- Necib H, Garcia C, Wagner A, Vanderlinden B, Emonts P, Hendlisz A, Flamen P, Buvat I: Detection and characterization of tumor changes in ¹⁸F-FDG PET patient monitoring using parametric imaging. *J Nucl Med* 2011, **52**(3):354–361.
- Palie O, Michel P, Menard JF, Rousseau C, Rio E, Bridji B, Benyoucef A, Meyer ME, Jalali K, Bardet S, M'Vondo CM, Olivier P, Faure G, Itti E, Diana C, Houzard C, Mornex F, Di F, Vera P: The predictive value of treatment response using FDG PET performed on day 21 of chemoradiotherapy in patients with oesophageal squamous cell carcinoma. A prospective, multicentre study (RTEP3). *Eur J Nucl Med Mol Imaging* 2013, **40**(9):1345–55.
- Herskovic A, Martz K, Al-Sarraf M, Leichman L, Brindle J, Vaitkevicius V, Cooper J, Byhardt R, Davis L, Emami B: Combined chemotherapy and radiotherapy compared with radiotherapy alone in patients with cancer of the esophagus. *N Engl J Med* 1992, **326**(24):1593–8.
- Vermandel M, Fin L, Hapdey S, Bol A, Betrouni N, Daouk J, Gardin I, Lee J, Jounwaz R, Rousseau J, Huglo D: An easy-to-use phantom and protocol for weekly PET quality assessment: a multicenter study. *Med Phys* 2008, **35**(9):3922–34.
- Tougeron D, Di Fiore F, Hamidou H, Rigal O, Paillet B, Michel P: Response to definitive chemoradiotherapy and survival in patients with an oesophageal adenocarcinoma versus squamous cell carcinoma: a matched-pair analysis. *Oncology* 2007, **73**(5–6):328–34.
- Stahl A, Ott K, Schwaiger M, Weber WA: Comparison of different SUV-based methods for monitoring cytotoxic therapy with FDG PET. *Eur J Nucl Med Mol Imaging* 2004, **31**(11):1471–8.
- Boellaard R, Krak NC, Hoekstra OS, Lammertsma AA: Effects of noise, image resolution, and ROI definition on the accuracy of standard uptake values: a simulation study. *J Nucl Med* 2004, **45**(9):1519–27.
- Boellaard R, Oyen WJ, Hoekstra CJ, Hoekstra OS, Visser EP, Willemsen AT, Arends B, Verzijlbergen FJ, Zijlstra J, Paans AM, Comans EF, Pruim J: The Netherlands protocol for standardisation and quantification of FDG

- whole body PET studies in multi-centre trials. *Eur J Nucl Med Mol Imaging* 2008, **35**(12):2320–33.
34. Boellaard R: **Need for standardization of 18 F-FDG PET/CT for treatment response assessments.** *J Nucl Med* 2011, **52**(Suppl 2):93S–100S.
 35. Safar V, Dupuis J, Itti E, Jardin F, Fruchart C, Bardet S, Vera P, Copie-Bergman C, Rahmouni A, Tilly H, Meignan M, Haiouan C: **Interim [18 F]fluorodeoxyglucose positron emission tomography scan in diffuse large B-cell lymphoma treated with anthracycline-based chemotherapy plus rituximab.** *J Clin Oncol* 2012, **30**(2):184–90.
 36. Geets X, Daisne JF, Tomsej M, Duprez T, Lonneux M, Gregoire V: **Impact of the type of imaging modality on target volumes delineation and dose distribution in pharyngo-laryngeal squamous cell carcinoma: comparison between pre- and per-treatment studies.** *Radiother Oncol* 2006, **78**(3):291–7.
 37. Arslan N, Miller TR, Dehdashti F, Battafarano RJ, Siegel BA: **Evaluation of response to neoadjuvant therapy by quantitative 2-deoxy-2- 18 F]fluoro-D-glucose with positron emission tomography in patients with esophageal cancer.** *Mol Imaging Biol* 2002, **4**(4):301–10.
 38. Roedl JB, Colen RR, Holalkere NS, Fischman AJ, Choi NC, Blake MA: **Adenocarcinomas of the esophagus: response to chemoradiotherapy is associated with decrease of metabolic tumor volume as measured on PET-CT. Comparison to histopathologic and clinical response evaluation.** *Radiother Oncol* 2008, **89**(3):278–86.
 39. El Naqa I, Grigsby P, Apte A, Kidd E, Donnelly E, Khullar D, Chaudhari S, Yang D, Schmitt, Laforest R, Throstad W, Deasy JO: **Exploring feature-based approaches in PET images for predicting cancer treatment outcomes.** *Pattern Recognit* 2009, **42**(6):1162–71.
 40. Tixier F, Le Rest CC, Hatt M, Albarghach N, Pradier O, Metges JP, Corcos L, Visvikis D: **Intratumor heterogeneity characterized by textural features on baseline 18 F-FDG PET images predicts response to concomitant radiochemotherapy in esophageal cancer.** *J Nucl Med* 2011, **52**(3):369–78.
 41. Vera P, Kaminska A, Cieuta C, Hollo A, Stievenart JL, Gardin I, Ville D, Mangin JF, Plouin P, Dulac O, Chiron C: **Use of subtraction ictal SPECT co-registered to MRI for optimizing the localization of seizure foci in children.** *J Nucl Med* 1999, **40**(5):786–92.

doi:10.1186/2191-219X-4-12

Cite this article as: Vera et al.: Monitoring tumour response during chemo-radiotherapy: a parametric method using FDG-PET/CT images in patients with oesophageal cancer. *EJNMMI Research* 2014 **4**:12.

Submit your manuscript to a SpringerOpen[®] journal and benefit from:

- ▶ Convenient online submission
- ▶ Rigorous peer review
- ▶ Immediate publication on acceptance
- ▶ Open access: articles freely available online
- ▶ High visibility within the field
- ▶ Retaining the copyright to your article

Submit your next manuscript at ▶ springeropen.com
